

Dual Vision Thermal Networking Camera



Fixed-mount Temperature Monitoring Camera with Thermal and Visible Sensors

The use of thermal imaging improves safety, security, visual inspection, productivity, and situational awareness. The PWTC100 thermal imaging cameras are provided with integrated software interface which can identify and locate hot spots and then initiate an automated response. Turning on an alarm, shutting down a system, or targeting the hot spot to activate fire suppression is possible via connection to a control system.

Thermal cameras recognize pre-fire conditions reliably and early, enhancing safety in and around facilities. Fires can cause significant damage to property and equipment, and expose employees and customers to dangerous situations. Not only can a fire be devastating in terms of financial loss, but it can also have a negative impact on an establishments reputation and ability to provide services.

Dual imaging cameras are designed to give a higher level of awareness to any operation. The PWTC cameras adds a layer of protection which provides active monitoring. This active monitoring ability provides a means to alert and locate potential hot spots prior to a fire. PWTC100 cameras can help avoid catastrophic losses and keep businesses running smoothly by quickly identifying overheating conditions.

The PWTC100 camera is extremely effective in recognizing overheat conditions inside coal conveyors, rubbish dumps, paper bunkers, and cardboard recycling plants. The probability of combustion in these areas is high with potentially disastrous effects for personnel and the environment.

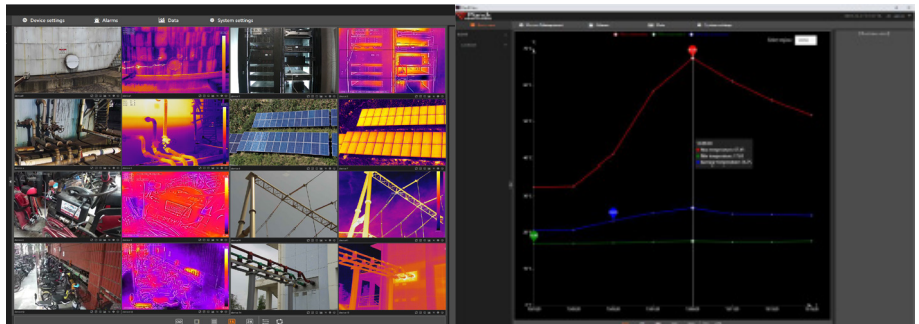
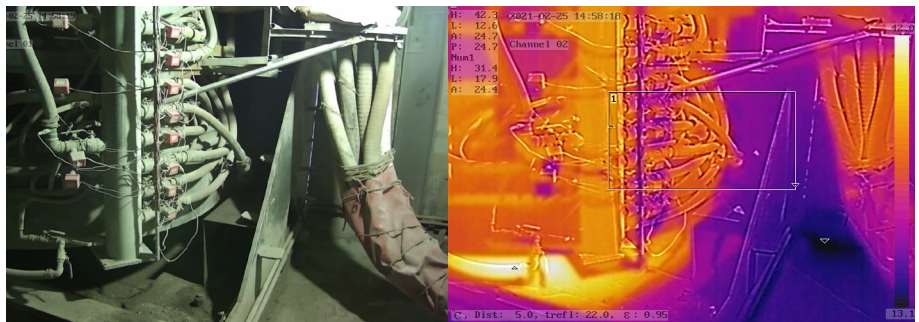
The PWTC100 utilizes high performance thermal sensors and a powerful integrated software package to analyze images and identify hot spots, making it a critical component for any facility management system. Additionally, a high-resolution video sensor provides the ability to monitor, record, and review hazards during and after events. The video monitoring component of the camera also allows for surveillance of open areas and spaces. Please contact Protectowire for more information about the capabilities of our PWTC100 camera.

Camera Features:

- Perfect for indoor and outdoor with provided sun shield
- Supports widely adopted protocols
- Global temperature monitoring with user defined zones
- Security area-monitoring features
- Supports user defined alarm protocols
- Alarm activated outputs and relay contact

Typical Applications:

- Mission Critical Operations and Facilities
- Process & Manufacturing areas
- Critical Infrastructure areas
- Storage facilities
- Recycling Plants
- Renewable Power Generation
- Perimeter Security
- AND MORE



CATEGORY		PARAMETERS	
Thermal Camera	Sensor	Uncooled Focal Plane Detector	
	Resolution/Pixel Size	256×192 / 12µm	
	Response Waveband	8~14µm	
	FOV	56°×42°	
	NETD	≤50 mK (@25°C;F#1.0)	
	Temperature Range	-20°C to 550°C (High gain range: -20°C to 150°C, Low gain range: 0°C to 550°C)	
	Temperature Accuracy**	±5°C or ±5% of the reading, whichever is larger	
	Image Fusion	Thermal image with fusion and visible with thermal image overlay	
	Palette	18 palette types and fusion with visible	
Visible Camera	Sensor	1/2.7 inches CMOS	
	Resolution	2592×1536	
	Lens focal length	3.5mm	
	Low light	Color:0.01 Lux @(F1.5) Black and white:0.001Lux @(F1.5) 0 Lux with IR)	
	Image Processing	Wide dynamic range, white balance, digital noise reduction, day and night modes	
	IR Illumination	Supported	
Network	Network Protocols	ICMP, TCP, UDP, DNS, RTP, RTSP, DHCP, PPPOE, UPNP, DDNS, and ONVIF.	
	Simultaneous video channels	6	
	Video Compression	H.264/H.265	
	Audio Compression	Audio G.711u / Intercom G.722	
Image	Maximum Image Resolution	2592×1536 (Visible), 640×480 (Thermal)	
	Main stream image(resolution/frame rate)	Visible: 2592×1536 or 1080P or 720P @25fps (Configurable) Thermal: 640×480 @25fps	
	Sub stream image (resolution/frame rate)	Visible: D1 or CIF (Configurable) Thermal: 640×480 or 320×240 (Configurable)	
	Image Flip	Support horizontal and vertical flip	
Functions	Measurement Regions	Supports point, line, area, full screen and shielded regions, with up to 12 independent regions	
	Temperature Alerts	4 temperature rules (above high, below low, between high/low, outside high/low), and supports temperature comparisons.	
	Smart Functions	Fire point & intensity, intrusion alarm, tripwire, and boundary crossing	
System Integration	Audio Interface	1 in/1 out	
	Communication Interface	RJ45 10M/100M self-adaptive; RS485	
	Storage Interface	1 TF card interface, supports up to 128G memory	
	Alarm Interface	1 in/1 out	
General	Operational Environment	Operational temperature -20°C~+70°C; humidity ≤95% non-condensation	
	IP Rating	IP67	
	Power Supply/Consumption	PWTC100F = DC24V; ≤5W	PWTC100C = DC12VDC / POE; ≤5W
	Dimension/Weight	200×97×99 (mm); 1.01 (kg)	

*Disclaimer: Specifications subject to change without notice.

**Laboratory test data at room temperature