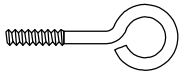


Eyebolt or Turnbuckle Solid Stainless Steel Messenger Wire
Supplied attached to Protectowire Linear Heat Detector

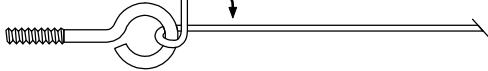


Step. 1 Loop end of messenger wire through eye



Minimum 4" (10cm) Length
Length provides leverage for bending

Step. 2 90 Degrees

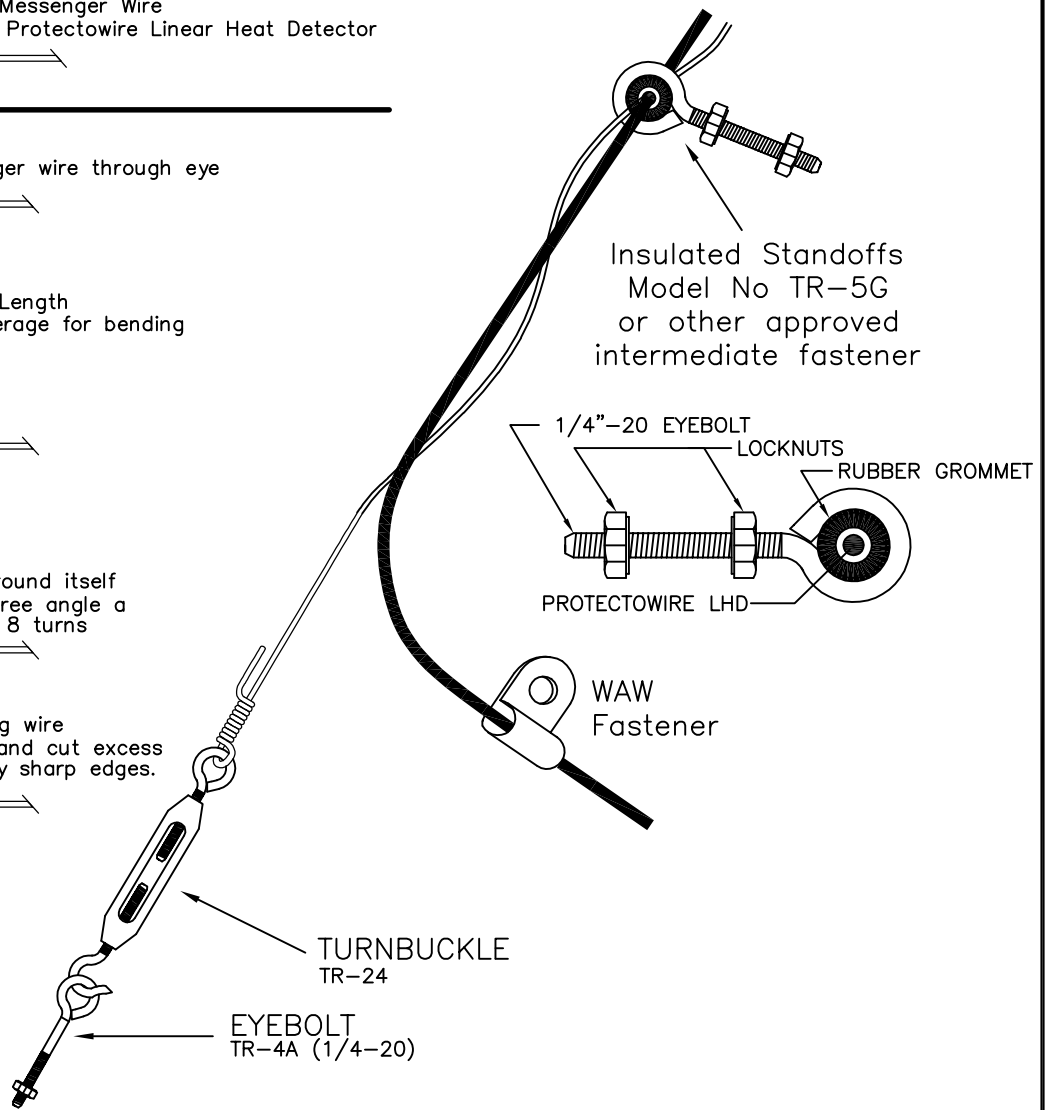
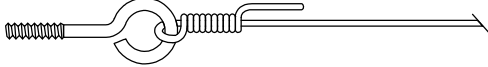


Hold Eye with pliers for additional leverage while wrapping

Step. 3 Wrap wire around itself at a 90 degree angle a minimum of 8 turns



Step. 4 Bend remaining wire 90 degrees and cut excess removing any sharp edges.



Messenger wire (a Protectowire innovation), is available with any model Detector on special order. It consists of high tensile strength stainless steel wire, which is wound around the Detector at the rate of approximately one turn per foot (.3 m). It is a carrier or support wire which is designed to simplify the installation of the Detector in areas where mounting is difficult due to the lack of appropriate support structures or mounting surfaces.

When using messenger wire to support the Detector, turnbuckles and eyebolts must be employed at each end of a straight run to place tension on the support wire. The maximum Detector run length between turnbuckles should not exceed 250 feet (76 m) and the wire must also be supported with approved intermediate fasteners at intervals typically ranging from 15 (4.5 m) to 20 feet (6.0 m). The final spacing of intermediate fasteners is largely determined by each individual application however, spacing should never exceed 50 feet (15 m) as excessive sag will result. Outdoor messenger wire installations present additional challenges due to environmental factors such as snow loads, ice build-up or wind. Increased detector support must be provided by using additional intermediate fasteners with closer spacing in all outdoor installations.

PROTECTOWIRE
FireSystems
Manufacturer of Special Hazard
Fire Detection Systems

*Installation Detail
Protectowire Linear Heat Detector
Installation Utilizing Messenger
In Open Areas*

DATE	REVISION	DWN:	CHKD:	APPD:
D 3-16	MESSANGER INSTRUCTIONS	DATE: 12/5/2014	SCALE: NTS	TOL:
E 9-16	TYPE ERROR	THE PROTECTOWIRE CO., INC. Pembroke, Massachusetts	DWG NO:	DS-8631F
F 9-17	TYPE ERROR			