

# Overheat and Fire Detection in Power Distribution Apparatus

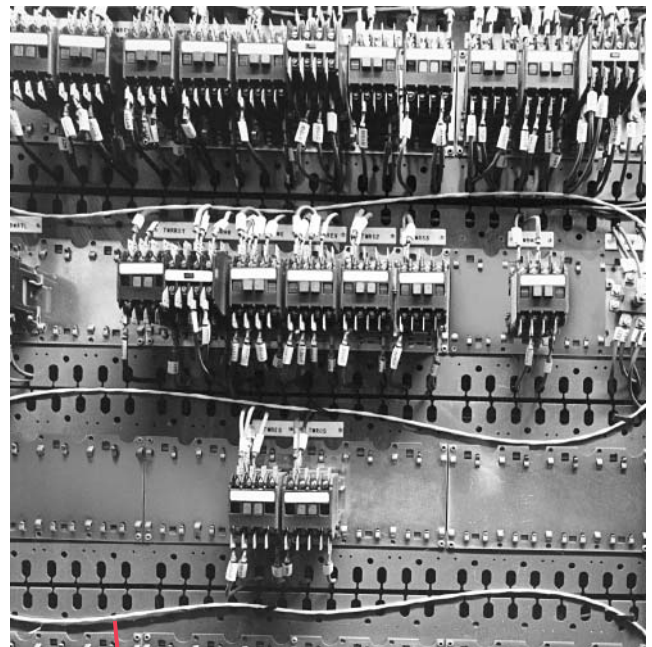
The inherent flexibility of Protectowire Linear Heat Detector permits installation in high risk areas such as motor control panels, switchgear, substations, transformers and resistor banks.

The Linear Heat Detector, when used with a Protectowire system control, provides continuous early warning detection for activating automatic fire extinguishing systems. The Detector is laced through power distribution apparatus and other associated equipment where ambient temperatures do not exceed the Detector rating. Nonmetallic cable ties are used for fastening.

Protectowire Linear Heat Detector, Types EPC or EPR, assures resistance to aggressive atmospheres often found in these locations. Other Detector types are described in our DS 6592.

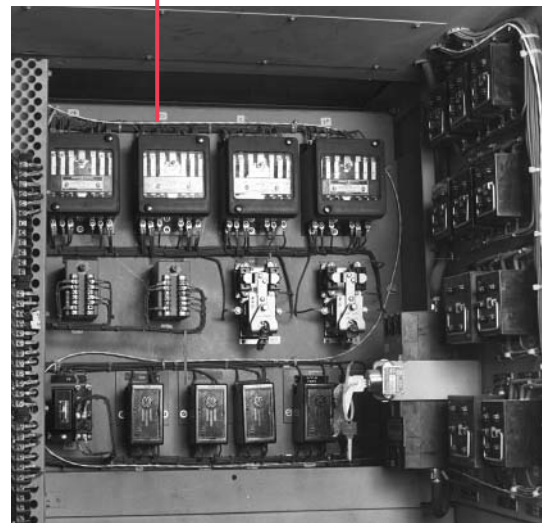
FM approved intrinsically safe custom installations are available for operation under hazardous conditions.

Protectowire Linear Heat Detector is a component of a complete family of fire detection systems manufactured by The Protectowire Company.



*Photo taken at: Bethlehem Steel Corp.  
Burns Harbor Plant, Burns Harbor, Indiana, U.S.A.*

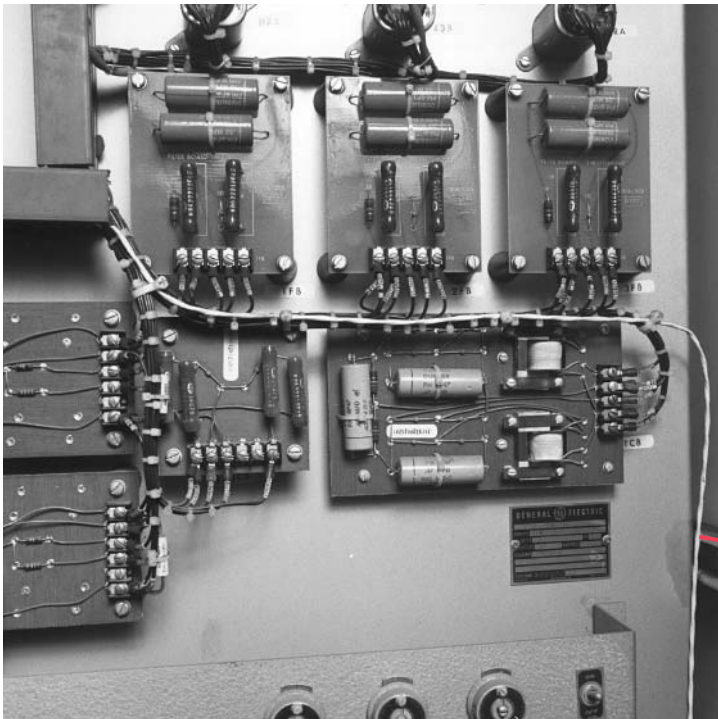
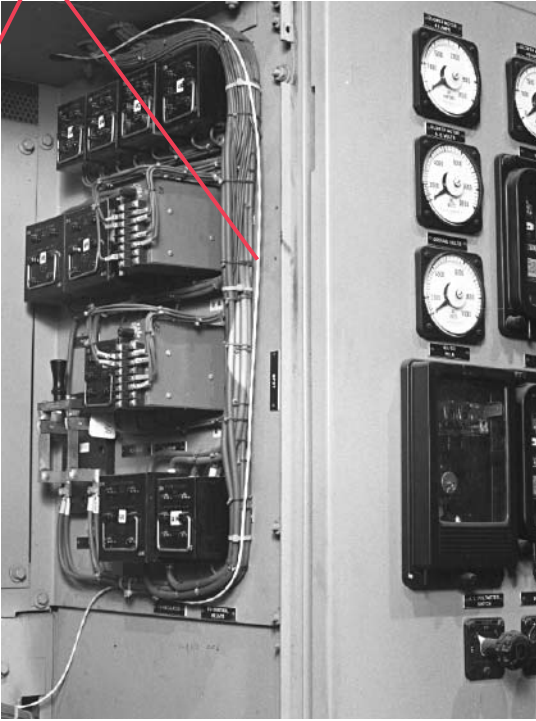
**Protectowire Linear Heat Detector**



*Photo taken at: Bethlehem Steel Corp.  
Sparrows Point Plant, Sparrows Point, Maryland, U.S.A.*



Protectowire Linear Heat Detector



Protectowire Linear Heat Detector

*Photos taken at: Bethlehem Steel Corp.  
Sparrows Point Plant, Sparrows Point, Maryland, U.S.A.*