

## Stratos-Micra™ 100



### Features

- Aspirating Smoke Detector in a small package provides an affordable solution to small to mid-size applications.
- High sensitivity provided by laser based forward light scatter mass detection with particle evaluation for reliable very early warning.
- Two sampling pipes, 164ft in length each, up to 328ft (50m) (aggregate) total detector.
- Unique ClassiFire® Perceptive Artificial Intelligence system that dynamically adjusts the detector's operating parameters, allowing for day to day changes in the protected environment and filter loading.
- Unwanted alarms from dust are avoided using patented Dual Technology LDD-3D™ Laser Dust Discrimination and elimination system.
- RS485 and RS232 communications built in as standard for networking, and remote communications.
- Rugged steel enclosure, suitable for industrial environments.

### Description

Stratos-Micra 100 is designed to provide very high sensitivity smoke detection in a small package for mid-size applications.

ClassiFire Perceptive Artificial Intelligence ensures that the detector operates at optimum sensitivity for the protected environment, without the need for complex setup. This means the product will configure itself to provide high sensitivity in a computer room or reduced sensitivity in areas with a high ambient background.

The detector is designed to fit into a Docking Station. All sampling pipes and cables are connected to the Docking Station as a first fix operation leaving the detector to be fitted during the final commissioning phase if required. This ensures that detectors are less likely to be damaged during the installation.

Equipped with 'Fault' and 'Fire' relays on-board. Can be ordered with optional Input Relay Card which provides four levels of alarm, fault and three programmable inputs. Relay outputs pro-

vide a convenient method for remote monitoring by local fire alarm panels or Building Management Systems. Open Protocol available for 3rd party integration and provides easy access to internal termination points for wiring or servicing.

## Options Available

- Addressable Protocol Interface Cards APIC™ available for most popular industry signaling protocols.
- Command Module available for central monitoring and display.
- SenseNET™ compatible - up to 127 detectors per loop.
- Remote Display units available.
- A lower cost Minimum Display version is available which features a rugged steel enclosure.
- Suitable for Stratos-MatrixScan, a patented software system which provides virtual addressable location detection - e.g. 10 physical detectors, would provide up to 45 unique addressable locations.

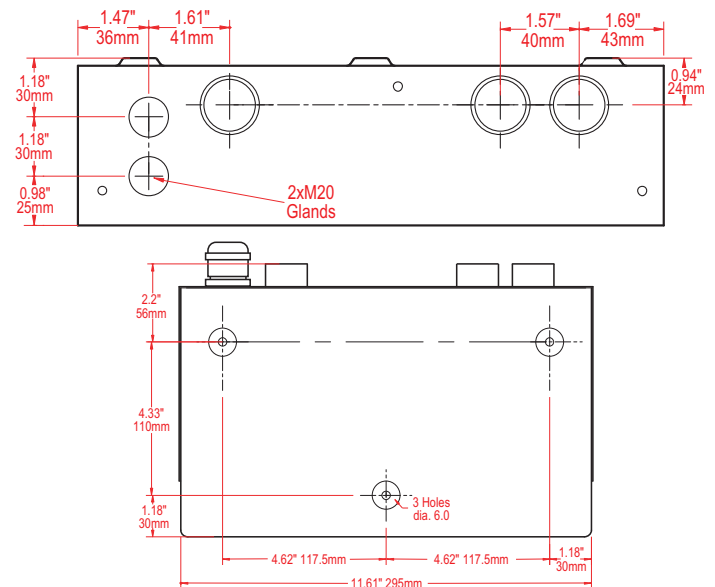
## Approvals

Approved/listed by most major international fire protection certification agencies. (contact Protectowire for latest details).

## Specifications Stratos-Micra 100

<b>Supply Voltage</b>	21.6 - 26.4VDC
<b>Current Consumption</b>	400mA @ 24VDC
<b>Size</b>	11.81w x 8.66h x 3.35d (inch) 330w x 220h x 85d (mm)
<b>Weight</b>	8.38b (3.8kg)
<b>Operating Temperature Range</b>	14° to 100°F (-10° to 38°C) (UL268)
<b>Operating Humidity Range</b>	0 - 90% non-condensing
<b>Measurement Range</b>	0.00046% to 7.62% obs/ft (0.0015% to 2.33% obs/m)
<b>Maximum Display Resolution</b>	0.00046% obs/ft (0.0015% obs/m)
<b>Detection Principle</b>	Laser light scattering mass detection and particle evaluation
<b>Particle Sensitivity Range</b>	0.003μ to 10μ
<b>Dust Discrimination Principle</b>	3D <sup>3</sup> ™ Laser Dust Discrimination (LDD)
<b>Recommended Max. Pipe Length</b>	164ft per inlet, 328ft aggregate
<b>Sampling Pipe Diameter</b>	3/4" (19mm) Nominal bore, 1" (27mm) OD
<b>Recommended maximum number of sampling ports</b>	25 per inlet, 50 total aggregate
<b>Alarm Levels</b>	4 (Aux, Pre-Alarm, Fire 1 and Fire 2)
<b>Laser Lifetime (MTTF)</b>	Greater than 1000 years
<b>Programming</b>	Command Module or PC via RS232/RS485
<b>Network Data Bus</b>	RS-485
<b>Maximum total Data Bus Length</b>	4,000ft (1,200m)
<b>IP Rating</b>	IP50 (similar to NEMA-12)
<b>Sampling Pipe Inlets</b>	2 (Docking Station)
<b>Exhaust Air Pipe Outlets</b>	1 (Docking Station)

## Docking Station Dimensions



Leave 3.14" (80mm) clearance at top and bottom of docking station for access.

## Ordering Information

Part No.	Description
30740	Stratos-Micra 100 Detector Module
30672	Stratos-Micra 100 with Docking Station
30764	Stratos-Micra 100 with Docking Station and Relay Input Card
30436	Relay Input Card
30755	Replacement Filter Cartridge
30420	Setup and Servicing Software (free of charge)
30419	Null Model RS232 Serial Cable (pc interface)
30902US	24VDC 2.5 amp Regulated Power Supply

## Applications

- Data Storage Cabinets
- Semiconductor Tools
- Prison Cells
- Mechanical Rooms
- Air Conditioning Units
- Equipment Racks
- Computer Rooms
- Flight Simulators
- Atriums
- Duct Applications
- Heritage Buildings
- Critical Equipment
- Elevator Shafts
- Motor Control Rooms
- MRI
- Tape Vaults
- Record Storage
- Cable Vaults